

## TECHNOTE

# How to connect to an Excel DB

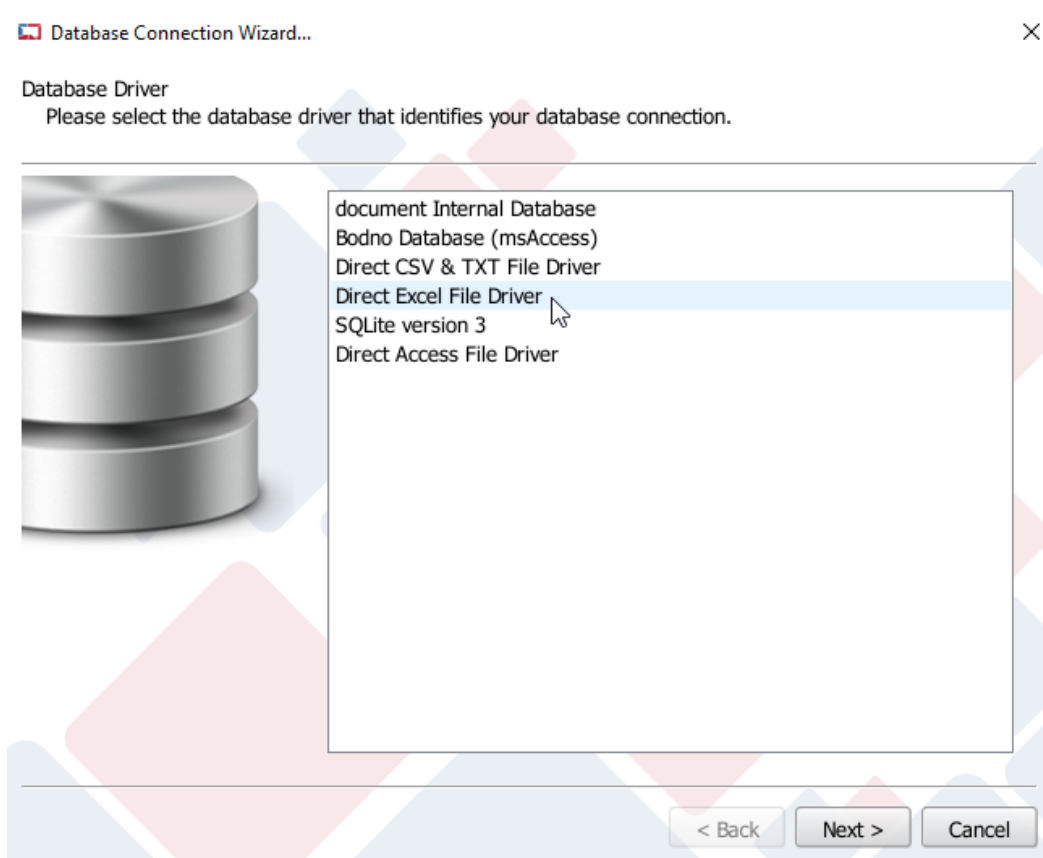
**DATE:** March, 2019

**AUTHOR:** Support

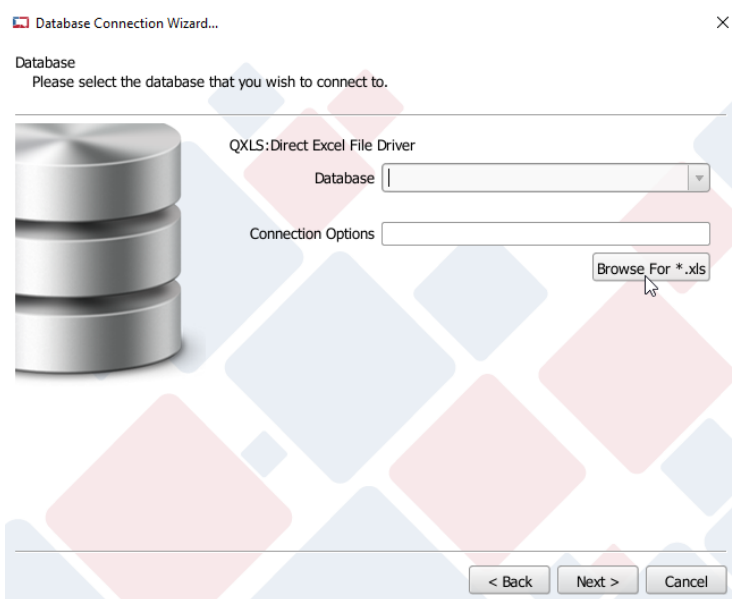
To connect to an Excel database, click in **Connect to database** button.



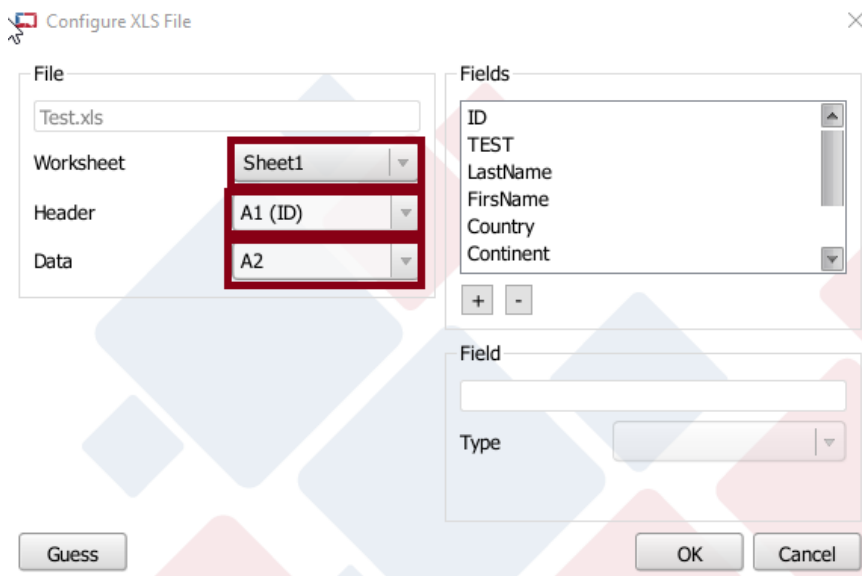
Select the **Direct Excel File Driver** option.



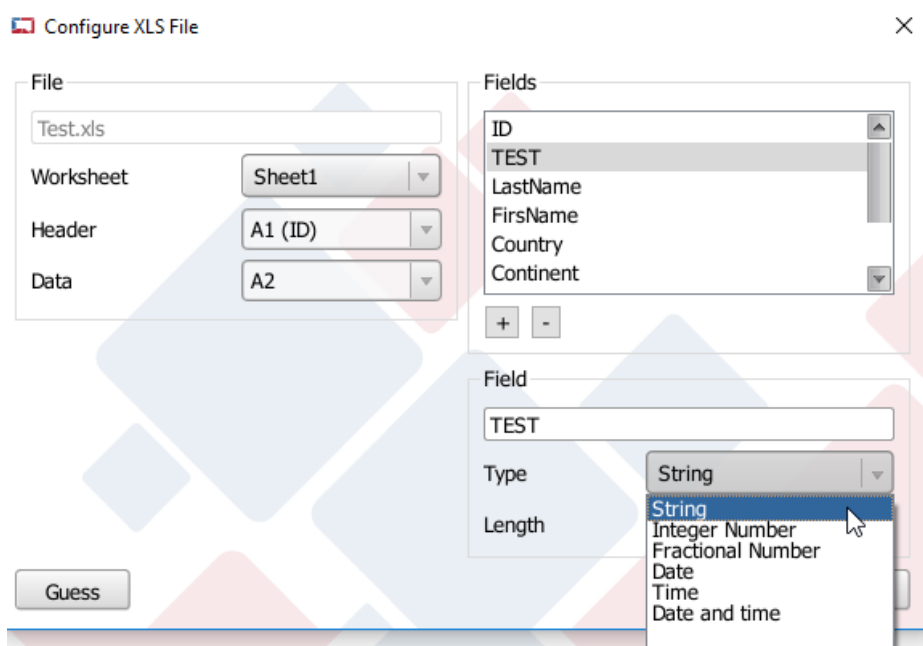
Browse the database file and click Next.



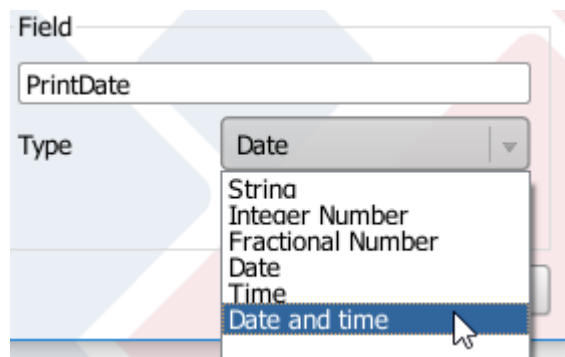
Select the worksheet that you want to work with, the header and where the data begins.



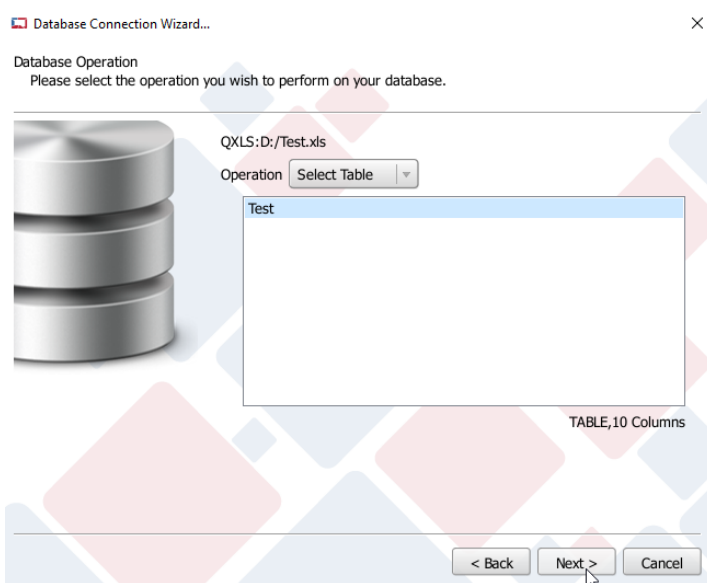
Select each column at a time and configure what kind of data the column is.



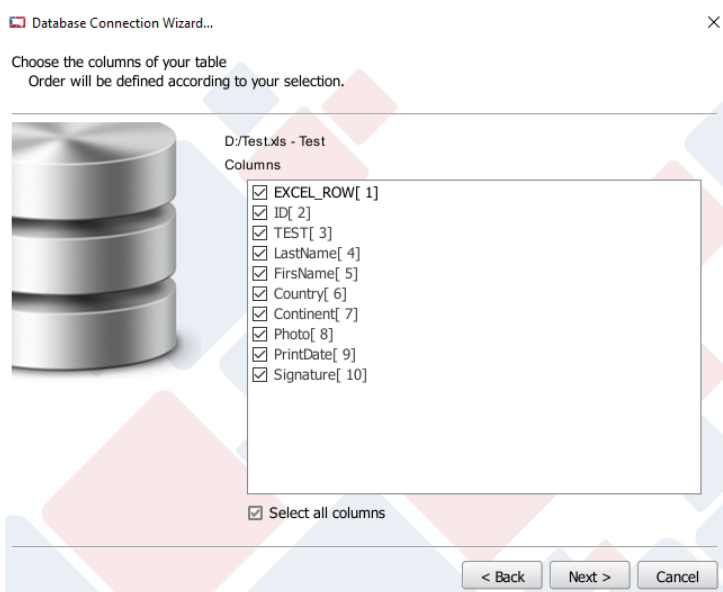
Note: To general data it is not necessary to configure the datatype, but when the column is Date and time type it is necessary to configure it during the connection otherwise data format will be incorrect.



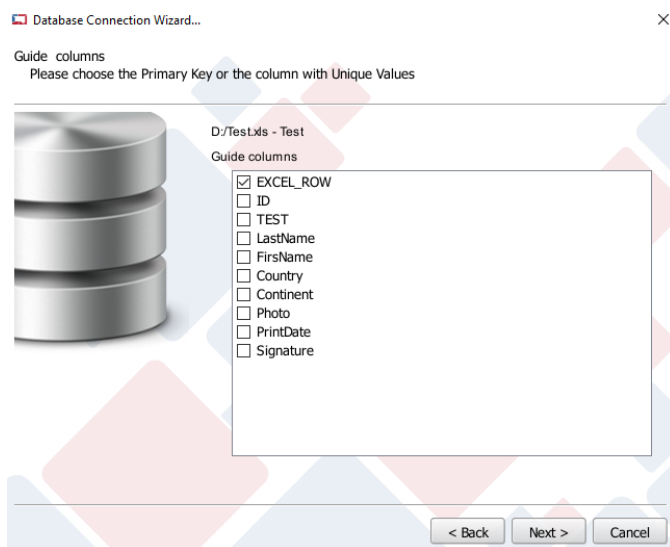
### Select the table.



### Select the needed columns.

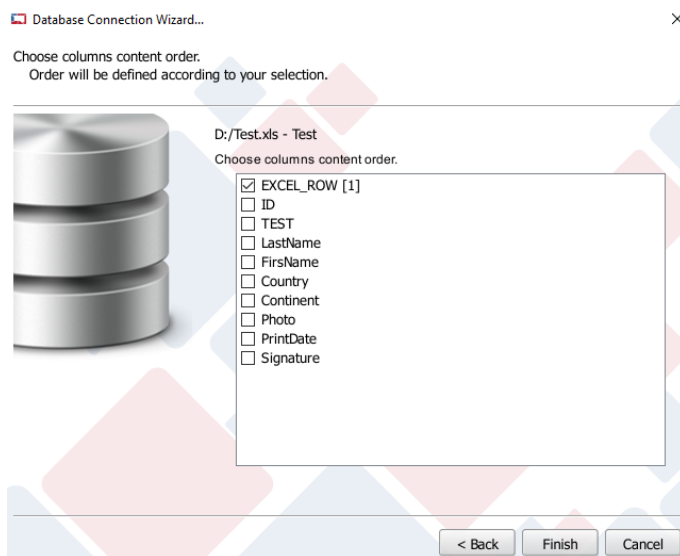


Select the Guide columns.



Click **Next**.

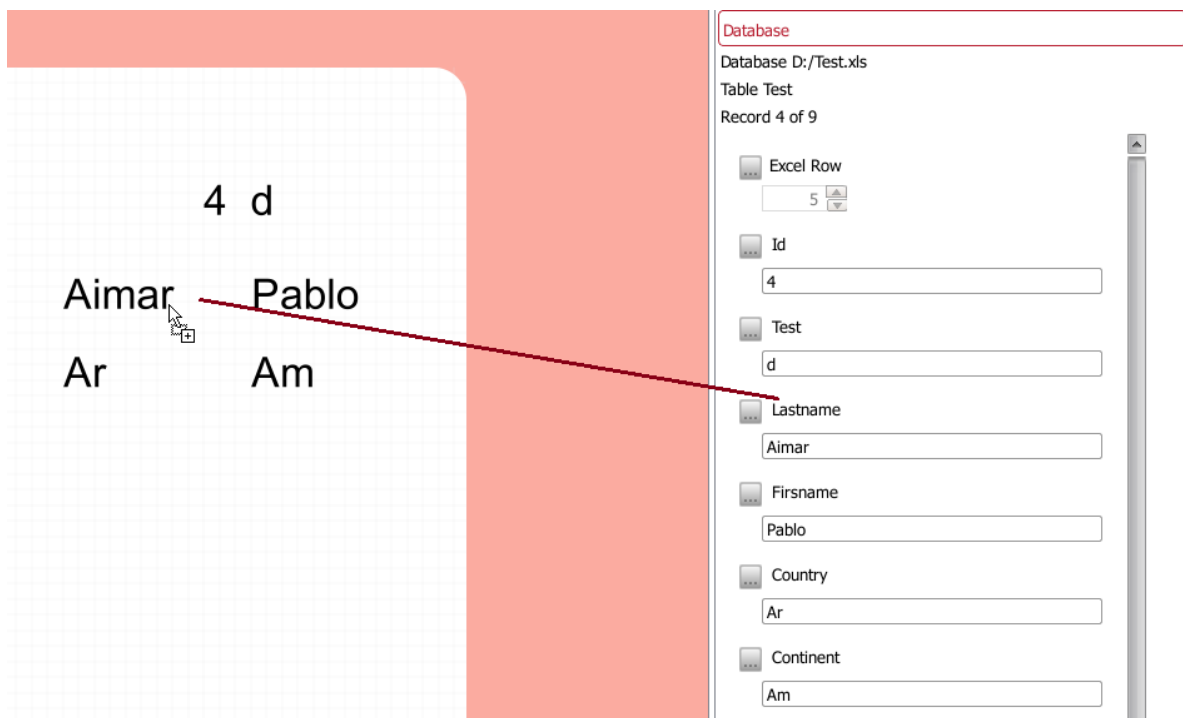
Select the columns order and click **Finish**.



The Excel Database is now connected to your \*.card and, if you have user permissions, you are able to add, edit and delete records from the database.

Please note that the database must remain closed when working with Bodno.

To use the database data in the design, drag and drop the column.



The screenshot displays the Bodno interface. On the left, a white grid contains a table with the following data:

	4	d
Aimar	Pablo	
Ar	Am	

A red arrow points from the 'Aimar' cell in the second row to the 'Lastname' field in the database panel on the right. The database panel, titled 'Database', shows the following details:

- Database: D:/Test.xls
- Table: Test
- Record: 4 of 9
- Excel Row: 5
- Id: 4
- Test: d
- Lastname: Aimar
- Firname: Pablo
- Country: Ar
- Continent: Am