

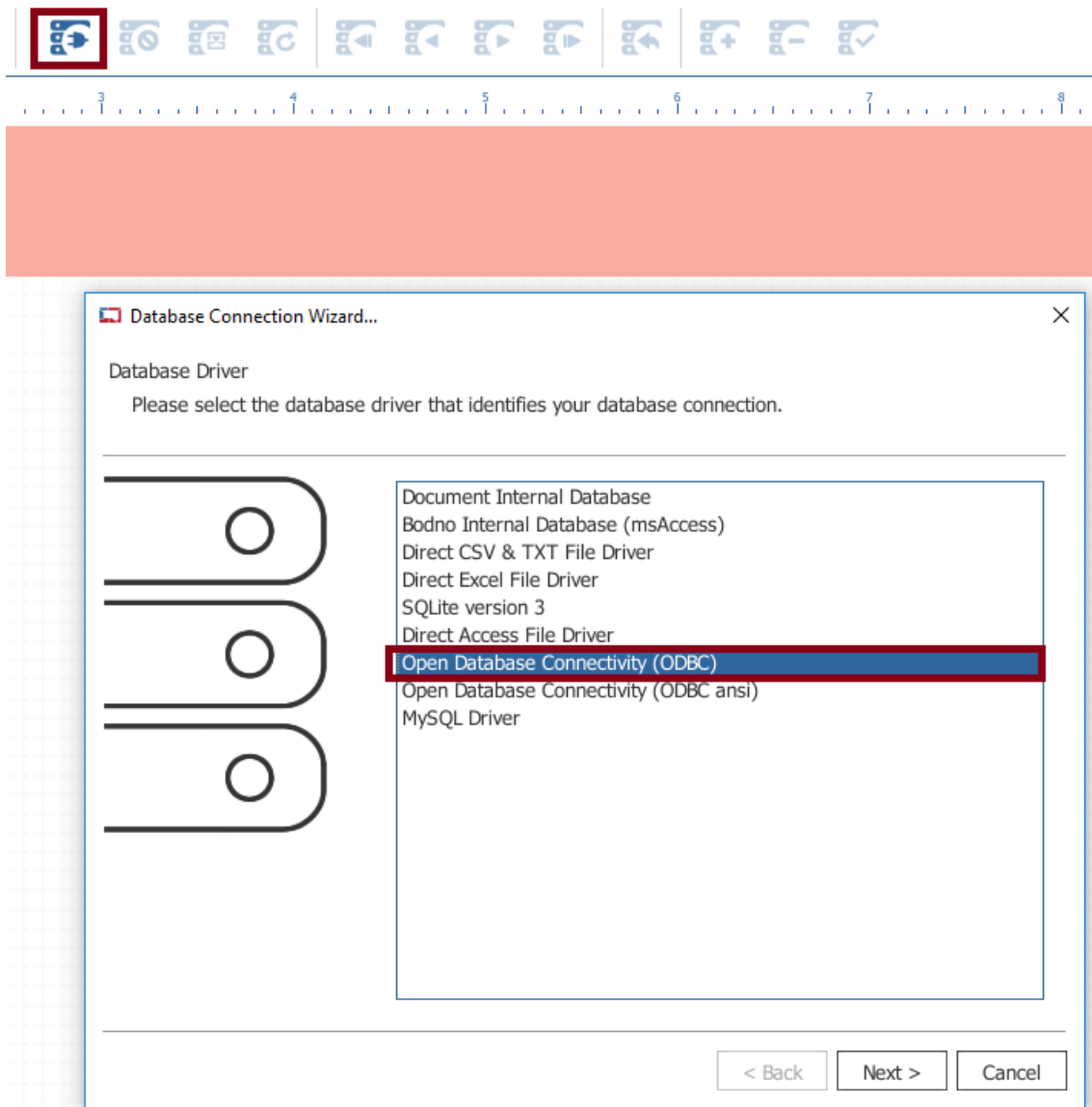
TECHNOTE

How to connect to a SQL Server DB

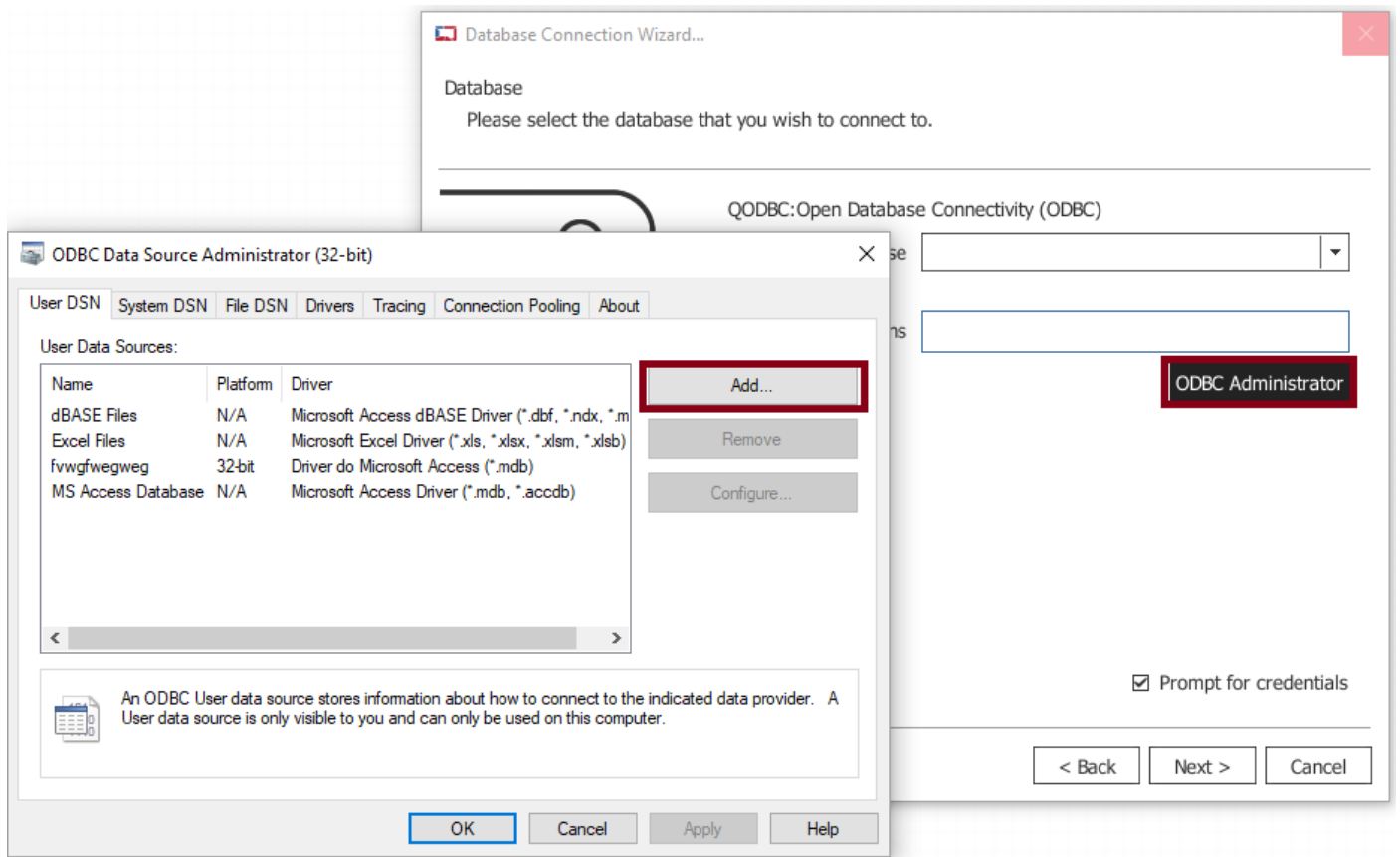
DATE: April, 2019

AUTHOR: Support

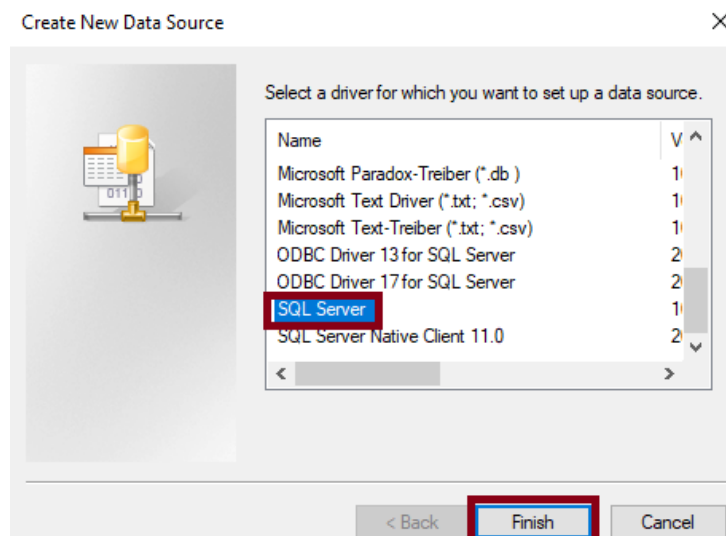
To connect SQL Server DB to cardPresso please click in the **Connect to Database** button and choose **ODBC** connection.



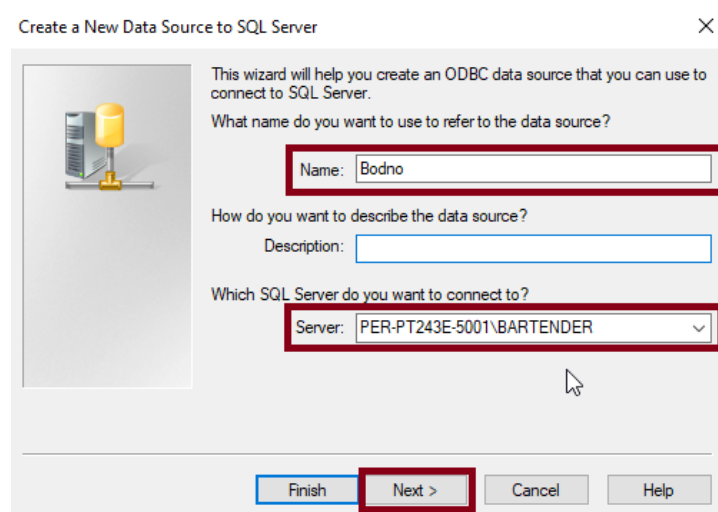
Click in the **ODBC Administrator** option and select the **Add...** button.



Select the SQL Server you need and click **Finish**.




Fill the **Name** that will identify the connection in cardPresso and select the correct **server** to connect and click **Next**.



Select the option for login and insert login data.

Create a New Data Source to SQL Server ✕



How should SQL Server verify the authenticity of the login ID?

With Windows NT authentication using the network login ID.

With SQL Server authentication using a login ID and password entered by the user.

To change the network library used to communicate with SQL Server, click Client Configuration.


Connect to SQL Server to obtain default settings for the additional configuration options.

Login ID:

Password:

Choose the options according to your needs and click **Next**.

Create a New Data Source to SQL Server ✕



Change the default database to:

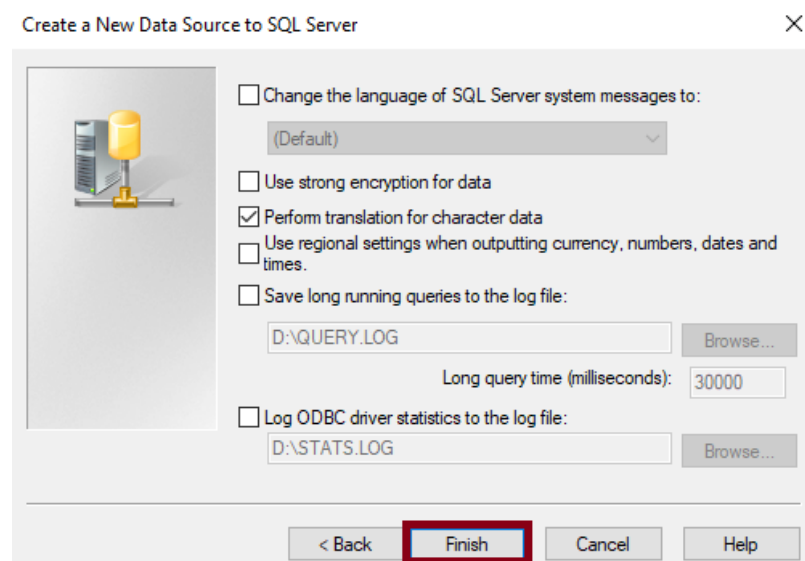
Attach database filename:

Use ANSI quoted identifiers.

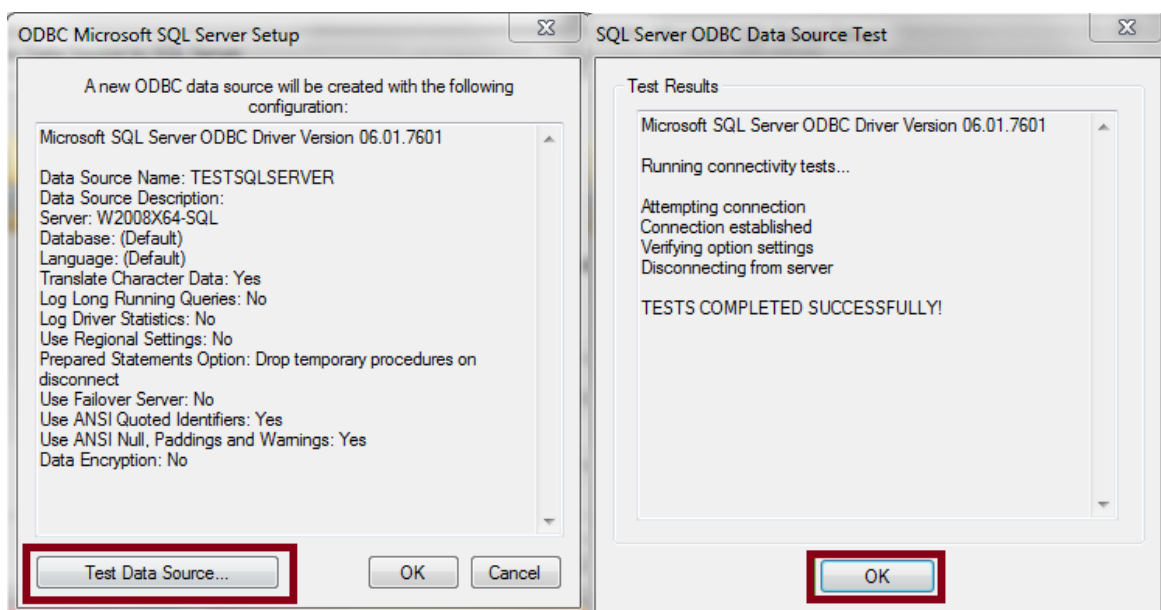
Use ANSI nulls, paddings and warnings.

Use the failover SQL Server if the primary SQL Server is not available.

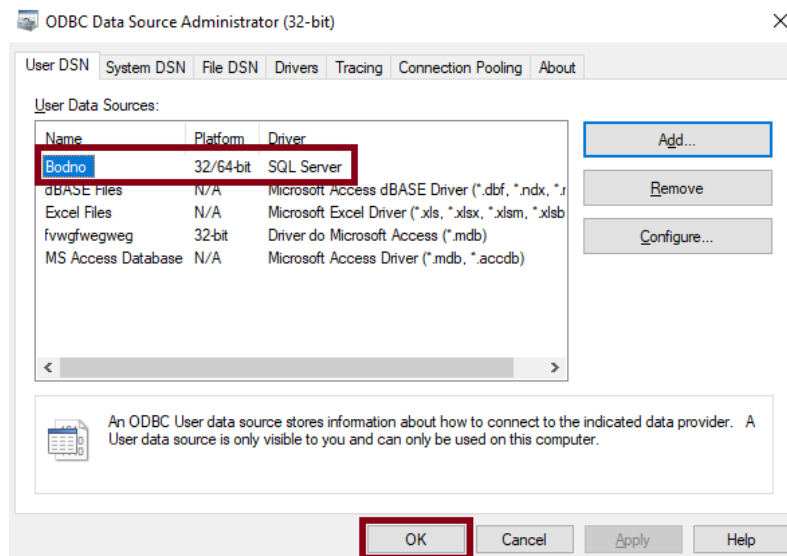
Select the options according to your needs and click **Finish**.



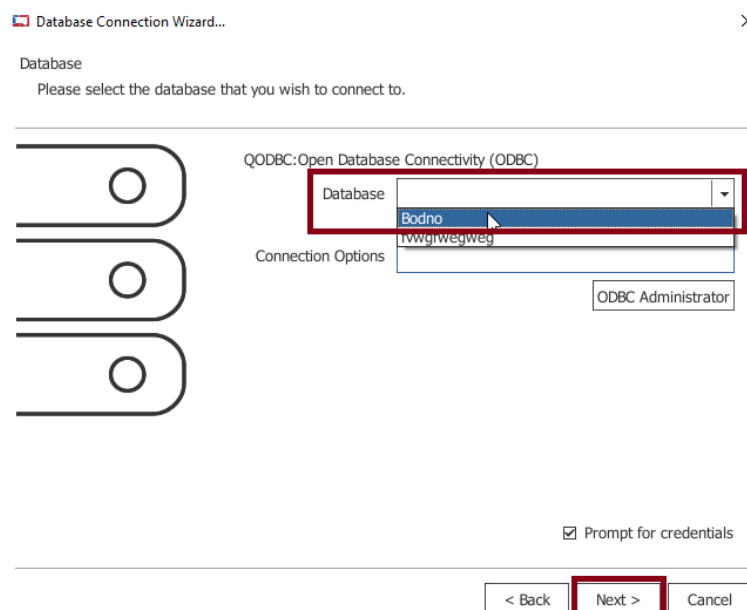
Test the Data Source and confirm that the connection is working as expected.



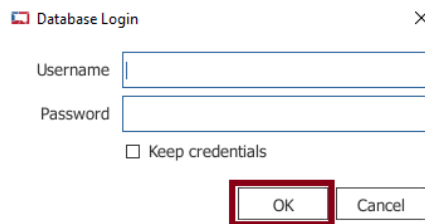
Click **OK** until you return to the initial window. Select the desired connection and click **OK**.



Select the correct ODBC and click **Next**.



Fill the credentials and click OK.



Database Login

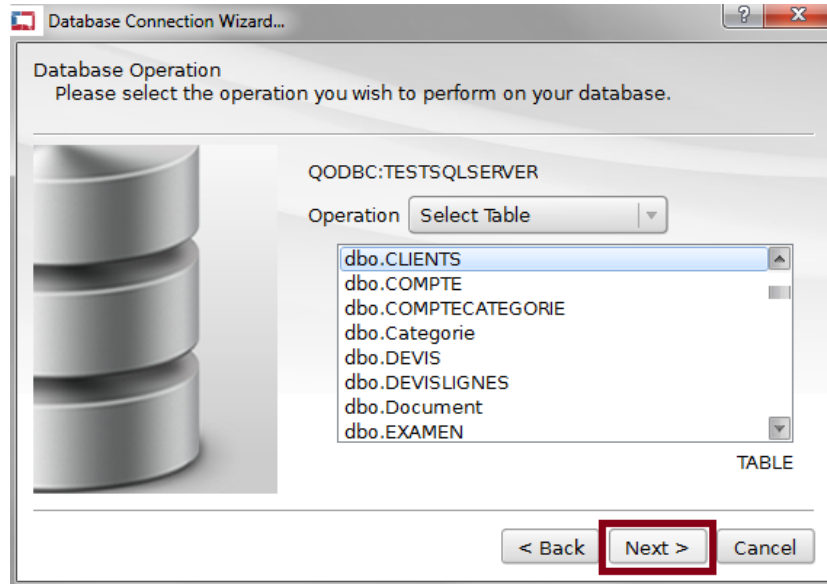
Username

Password

Keep credentials

OK Cancel

Select the table you want to work with and click **Next**.



Database Connection Wizard...

Database Operation
Please select the operation you wish to perform on your database.

QODBC:TESTSQLSERVER

Operation

dbo.CLIENTS
dbo.COMPTE
dbo.COMPTECATEGORIE
dbo.Categorie
dbo.DEVIS
dbo.DEVISLIGNES
dbo.Document
dbo.EXAMEN

TABLE

< Back **Next >** Cancel

Proceed with the connection clicking **Next** until Finish.

The connection is now established, and your table data is available in Bodno.

If the user has proper permissions it is possible to add, edit and delete records through Bodno.