

TECHNOTE

Add and Remove Extra Design Layers

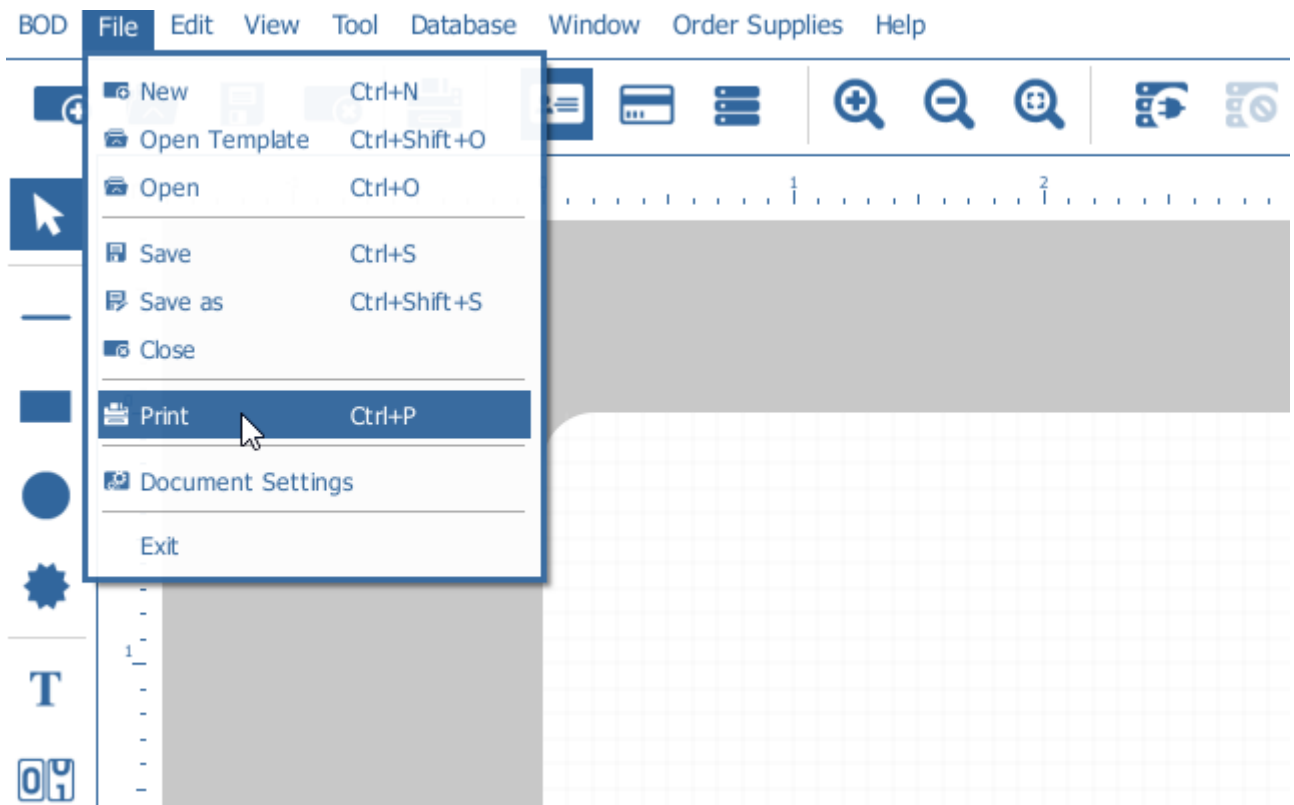
DATE: Febuary, 2019
AUTHOR: Bodno

Summary

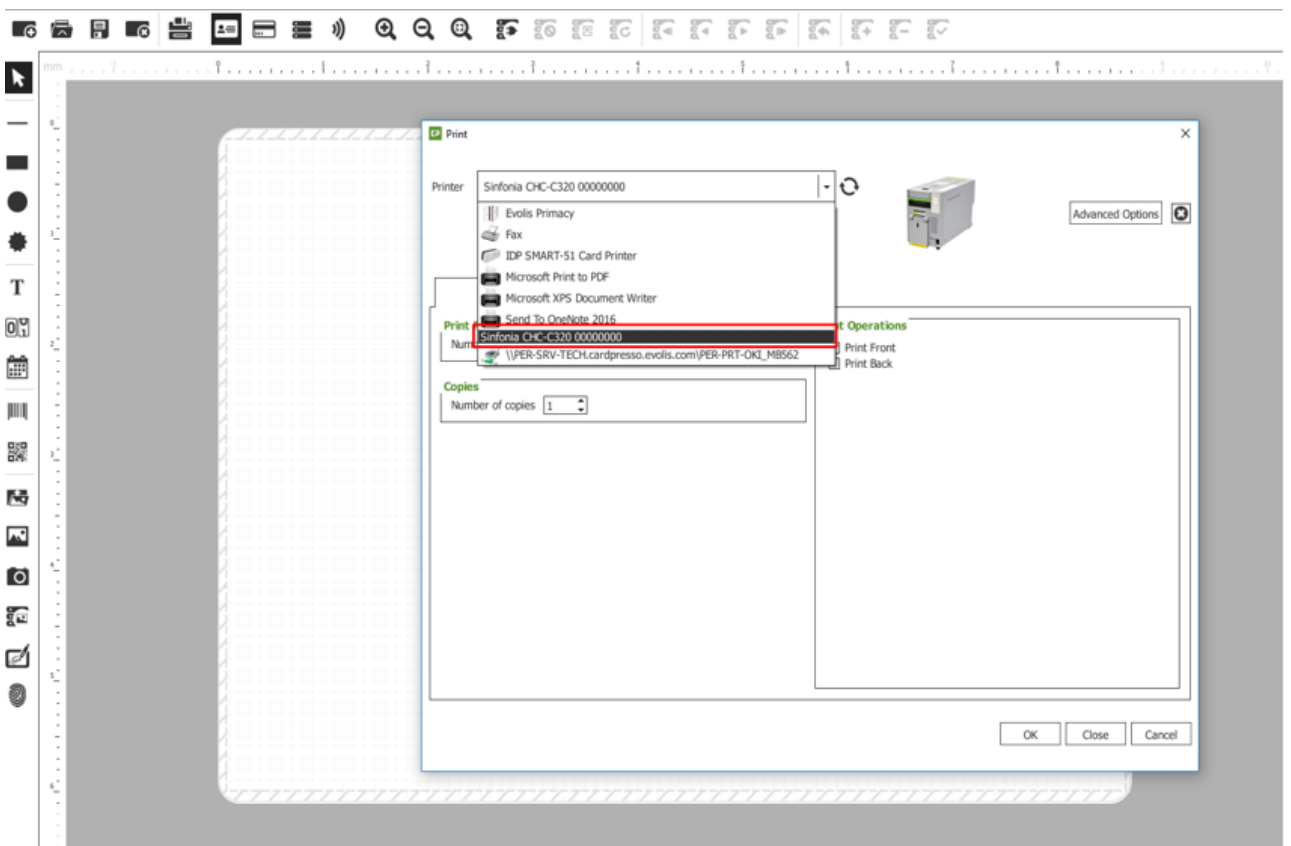
This technote will guide you in the necessary steps to add and or remove design layers.

Step Through

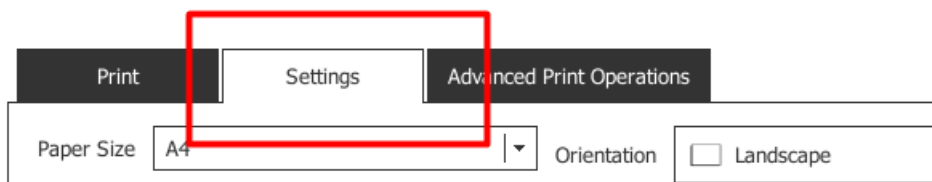
1. Go to File and Select Print



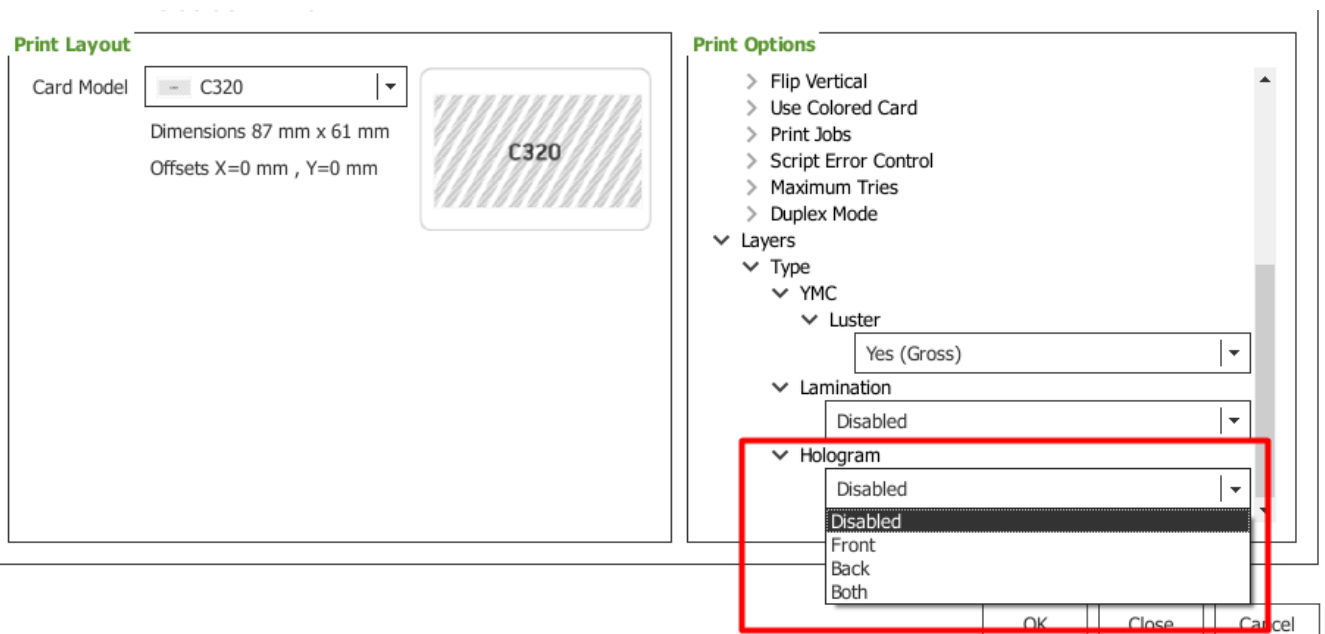
2. Select a printer that supports distinct layers. (**ex. Sinfonia C320**)



3. Go to the Settings Tab



4. On the Print Options Area scroll until the Layers Section appear. Here you can choose to add or remove a print Layer.



- Disabled – No design Tab for this Layer
- Front – Layer will be available for design only in the Front side of the card.
- Back – Layer will be available for design only in the Back side of the card.
- Both – Layer will be available for design in Front and Back side of the card.

5. To navigate between the different design Layers please use the Tab on the bottom-left corner of the design area

